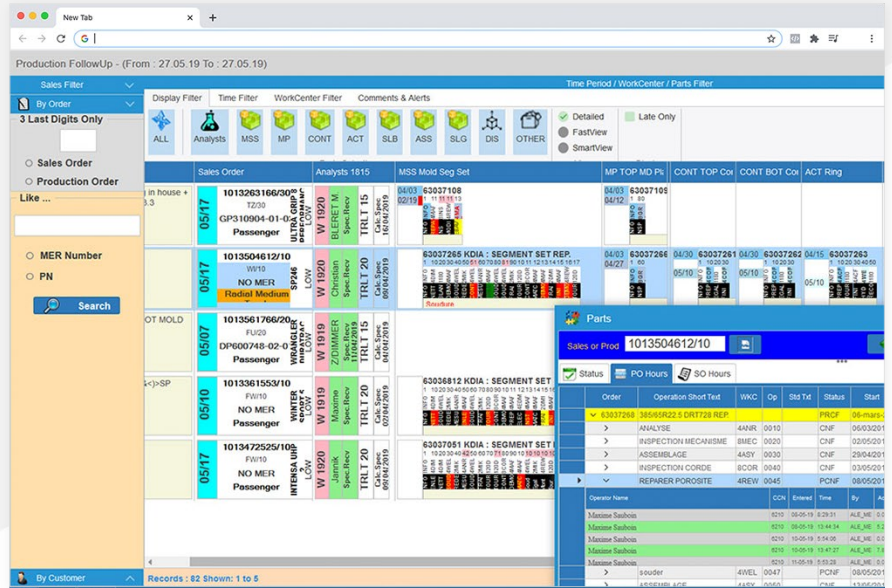




# Goodyear

Wisej supports Goodyear shop floor production process



Goodyear implements real-time production monitoring and shop floor RFID system using Wisej in a fraction of the time when compared to other web technologies.

In one production plant, Goodyear used Wisej to develop a production follow-up system, which is interfaced with SAP and MES. The system monitors around 30,000 operations in the production activities at a given time. “To follow live such an amount of data, we had to build a visual interface specific to our needs, where each shown text or color has its meaning for the production planning team. Currently the GUI has many information packed in it, that it allows people to take the right decision straight from the interface, without going to the linked systems” says Eric Mathay, lead developer for the application.

Once the team is on the shop floor, they use an RFID Bluetooth scanner attached to a tablet. The need was to have the web application shown on the tablet and update the GUI based on the scanned data in real time. From the tablet the scanned data is sent to a message server and the Wisej application gets notified using the message server library running as a background task. By using Wisej, updating the web applications GUI on the browser from the background task is very easy. Despite being a browser-based application, the user experience is fast and smooth with tight integration of RFID scanners similar to a local application setup. This subsystem was created in less than 2 hours!



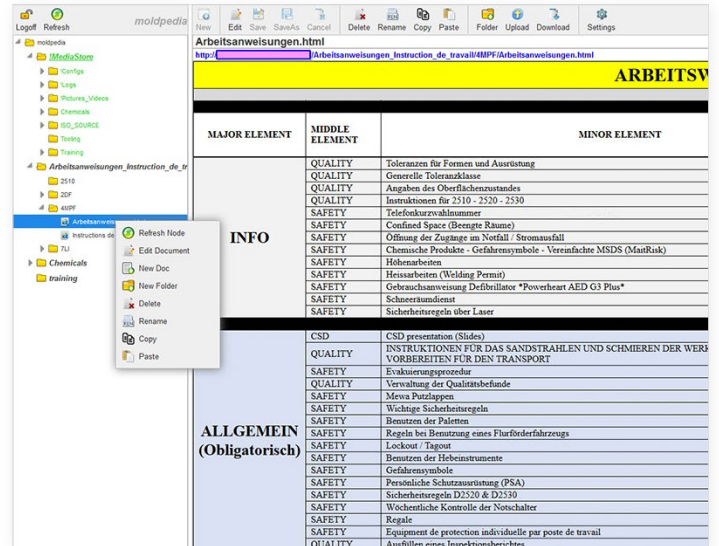
Goodyear's software engineers also developed an internal Wiki in a matter of few weeks, featuring Active Directory authentication, hierarchical documents selection, online documents editing, full pages management, folders management, upload of documents, back-end file storage, video tagging during upload, etc. This application is currently being used as the unified document viewer for the shop floor.

## Core Benefits of Wisej

Wisej claims to enable business web development to be much faster than other web technologies. "We can easily confirm it from our experience with the product. Through the use of the IDE and all its inherent benefits, Wisej transforms visual components into accurate representation of the UI." Eric continues: "We found the Wisej concept to be unique in the JavaScript development ecosystem. After all, the concept of a Visual IDE greatly helped to the success of the Microsoft "Visual" products line. Due to the fact that we develop for our internal needs, the latest GUI fancy stuff wasn't a key decision factor in the product selection (this doesn't mean that Wisej lacks fancy UI support), but we rather focused on the speed of development."

One of the key characteristics of Wisej is its openness to other environments, which really allows for a lot of integration scenarios. In fact, "most of the time the limitation isn't the product itself but your knowledge on how to take benefit of the vast possibilities it offers."

Wisej is constantly enhanced by listening to the developers using it in all kinds of business web applications. "In fact they have the same kind of dynamic as an open source product with a good community, but in a commercially supported product. The professional and reactive support given through the Wisej forum is also an important and mandatory part of a good development framework."



## Results Achieved

- Fast development.
- Real time server to browser updates.
- Easy integration with third party widgets.
- Rich and responsive web interface.
- Seamless integration with other systems (SAP, MES, RFID scanners).



info@wisej.com | wisej.com

+1-202-449-3778 | +1-800-440-7049

The screenshot shows a web browser window displaying a document titled "Arbeitsanweisungen.html". The document content includes a yellow header with the text "ARBEITSWEISE WORKCENTER 4MPF" and "LAST SAVE: 5/10/2019 11:21:18 AM". Below the header is a table with the following structure:

| MAJOR ELEMENT | MIDDLE ELEMENT | MINOR ELEMENT  | REFERENCE WIN            | KNOWLEDGE(K) SKILL(S) | RELATE |
|---------------|----------------|--|--------------------------|-----------------------|--------|
| INFO          | QUALITY        | Toleranzen für Formen und Ausrüstung                               | <a href="#">WIN-0001</a> |                       |        |
|               | QUALITY        | Generelle Toleranzklasse   | <a href="#">WIN-0003</a> |                       |        |
|               | QUALITY        | Angaben des Oberflächenzustandes                                   | <a href="#">WIN-0011</a> |                       |        |
|               | QUALITY        | Instruktionen für 2510 - 2520 - 2530                               | <a href="#">WIN-0073</a> |                       |        |
|               | SAFETY         | Telefonkurzwahlnummer  | <a href="#">WIN-0144</a> |                       |        |
|               | SAFETY         | Confined Space (Beengte Räume)                                     | <a href="#">WIN-0157</a> |                       |        |
|               | SAFETY         | Öffnung der Zugänge im Notfall / Stromausfall                      | <a href="#">WIN-0162</a> |                       |        |
|               | SAFETY         | Chemische Produkte - Gefahrensymbole - Vereinfachte MSDS (MatRisk) | <a href="#">WIN-0184</a> |                       |        |
|               | SAFETY         | Höhenarbeiten  | <a href="#">WIN-0183</a> |                       |        |
|               | SAFETY         | Heissarbeiten (Welding Permit)                                     | <a href="#">WIN-0196</a> |                       |        |
|               | SAFETY         | Gebrauchsanweisung Defibrillator "Powerheart AED G3 Plus"          | <a href="#">WIN-0226</a> |                       |        |
|               | SAFETY         | Schneeräumdienst   | <a href="#">WIN-0270</a> |                       |        |
|               | SAFETY         | Sicherheitsregeln über 1. gear                                     | <a href="#">WIN-0274</a> |                       |        |

## About Goodyear Tire

The Goodyear Tire & Rubber Company is an American multinational tire manufacturing company founded in 1898 by Frank Seiberling and based in Akron, Ohio.

Goodyear manufactures tires for automobiles, commercial trucks, light trucks, motorcycles, SUVs, race cars, airplanes, farm equipment and heavy earth-mover machinery. It also produced bicycle tires from its founding until 1976. As of 2017, Goodyear is one of the top four tire manufacturers along with Bridgestone (Japan), Michelin (France) and Continental (Germany).

## About Ice Tea Group

Ice Tea Group LLC, located in Washington DC, is a worldwide specialist for enterprise application modernization and business web frameworks.

We help developers and organizations stay competitive. Our mission is to strengthen and increase the value of enterprise-scale software assets by providing modernization paths throughout technology changes.

Since 1998, our services and frameworks have been used by more than 600 companies, in 4,800+ applications, over 50 countries. Some of our clients are: Fujitsu, Lidl, Goodyear, Xerox, Skanska, Volvo, Merck, GE Healthcare, IFS, Air New Zealand, CBS, SAGE, Ericsson, Siemens, ASFINAG, Markel, Ameriprise, Europ Assistance.

[iceteagroup.com](http://iceteagroup.com)

Disclaimer: Ice Tea Group and Goodyear Tire & Rubber Company make no guarantee, warranty or representations. Any projections or estimates are opinion and do not guarantee the current or future performance of the software or represent any kind of contractual obligation on our part. You should conduct an independent investigation of the software to determine to your satisfaction the suitability of the software for your needs.